

INTEPRO SYSTEMS



simplifying Power Supply **Test**

19500ixi

A Perfect Blend of Software and Technology



POWERSTAR 5 POWERFUL FACILITIES INCLUDE:

- Application specific test libraries
- Drag and drop program generation
- Comprehensive test sequencing control
- SQL™ and MS Access® database reporting
- High-speed performance
- GUI/IVI Programming Programming
- In environment LabView™ support
- Virtual instrument support
- Visual Basic™, Atlas or IEEE-1641 programming

Intepro Systems are used by power supply users and manufacturers all over the world to meet their design, manufacturing and quality control needs. Our knowledge and expertise in commercial power supply testing led to development of the new 9500lxi bench-top test system—a fast, accurate and comprehensive functional test of AC-DC and DC-DC converters.

The 9500lxi is specifically designed for the high volume, low power applications. Its small, bench top cabinet (< 1 m³) and Ethernet control allows for distributed integration into your production lines at a price that lets you install as many systems as required.

Its distributed measurement system and Intepro's Ripple/ Noise measurement allows for test speed in seconds (UUT dependent) not minutes. A combo AC and DC source makes allows one test station for both AC-DC as well as DC-DC convertors.

PowerStar™ 5—The Standard in Test Software

Key to the systems flexibility is Intepro's open software platform, PowerStar 5. PowerStar 5 allows test programs to be independent of the hardware. This allows for programs developed on the engineering stations to be sent to the production floor with minimal or no changes to the programs.

The test executive supports fast TPS development with and without writing test code. Over 120 power supply test routines make test programs a simple drag and fill in process. Major time saving features include:

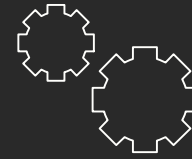
- ◆ Fill-in-the blanks test program generation using predefined tests.
- ◆ Family testing lets a single test program to be used for an entire series of power suppliers.
- ◆ Variables as well as numeric values are supported so tests can be more universal
- ◆ Users can customize library tests or generate their own special tests.
- ◆ Standard test libraries included comprehensive control of test sequence execution including 'for_next' and 'while_end' loop controls.
- ◆ Virtual Applications so users can customize the test screens to the operators' local language and production instructions.
- ◆ Results output in SQL or MS Access® data files for easy integration into the user's production and quality management system

SMALL FOOTPRINT, AC AND DC SOURCES,
UP TO 5 OUTPUTS AND 500W



FAST TEST SPEEDS AND FAMILY TESTING MAKES IT
IDEAL FOR HIGH VOLUME AND HIGH MIX PRODUCTION

Low cost solutions for your power test needs



CONFUGURABLE TO YOUR
TEST NEEDS

Modular and expandable

Loads can be paralleled for higher power outputs

Standard Configuration allows for fast out-of-the box test start up



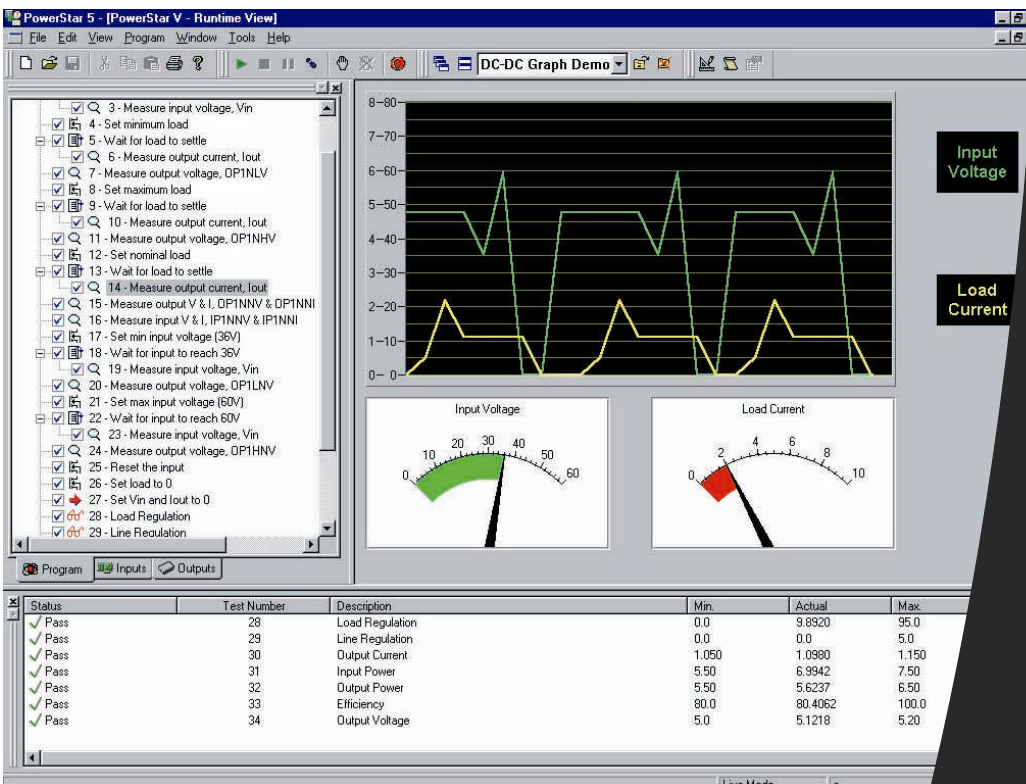
WEB CONNECTED

The standard Ethernet interface lets users direct connection to the company VPN or LAN for centralize database and test programs,



PowerStar 5 Software

PowerStar 5 runs on any XP Pro or Windows 7 (2010) compatible computer with Ethernet interface.



Intepro Systems 9500lxi

Modular design for testing AC/DC or DC/DC power supplies up to 500 W

Source	AC and DC Output	DC Loads	2 Standard, 5 maximum
AC	750 VA, Single phase	Modes	Constant current, voltage, power and resistance modes and pulsing
Voltage	0-150 / 0-300 VAC rms	Voltage	0.5—75 VDC
RMS Current	6.5 / 3.25 Arms	Current	0-4 / 0-40 A
Peak Current	20 / 10 Apk	Power	200 W
Frequency	16—1000 Hz		
DC	250 / 500 W	OV Source	OVP Source / DC Source 2
Voltage	0-200 / 0-400 VDC	Voltage	0-35 / 0-60VDC dual range
Current	0-1.63 / 0-1.63 A	Current	0-2.2 / 0-1.3 A
		Power	80 W

Measurement System

4-1/2 Digit distributed measurement system for DCV, ACV, Power, Peak Current. Measurements on each source and load for faster test speeds.

RMS and PK-PK Ripple (30Mhz maximum BW) with spike rejection and bandwidth selection. Ripple/Noise switch to each output. Pk-Pk limit test for improved test speeds.

flexible

Represented By:

Intepro Systems America, LLC.
1530 S. Lyon Street
Santa Ana, CA 92705 USA
Tel: +1 714.656.3551
Fax: +1 714.953.3150

Intepro Manufacturing Ireland, Ltd.
Lonsdale Road
National Technology Park
Limerick, Ireland
Tel:[+353] 61 332233

Intepro UK, Ltd.
1 Lakeside Business Park
Swan Lane
Sandhurst
Berkshire GU47 9DN / UK
Tel/Fax: [+44] 1252 875600

E-mail: sales@inteproate.com
support@inteproate.com